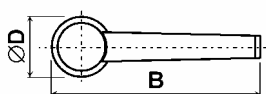
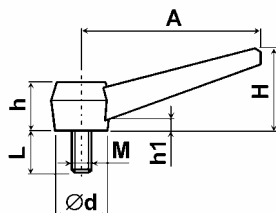


Páčky se šroubem Typ: 332-012-A/MxL

Materiál: termoset, závit pozinkovaný; Barva: černá, červená, žlutá



A	M x L	B	∅D	∅d	H	h	h1
60.0	M 6 x 10.5	69.5	19.0	16.0	27.0	16.0	3.0
70.0	M 8 x 14.5	81.5	23.0	20.0	33.0	19.0	4.0
80.0	M10 x 18	93.5	27.0	23.0	38.0	22.0	6.0
90.0	M12 x 21	105.0	30.0	26.0	43.0	25.0	6.0



Páčky se šroubem Typ: 332-068-A/MxL

Materiál: PA plněný sklem, závit pozinkovaný; Barva: černá



A	M x L	B	D	d	H	h	h1
40.0	M 6 x 15	49.0	18.0	16.0	28.0	22.0	6.0
55.0	M 8 x 25	65.0	22.0	20.0	39.0	23.0	5.0
55.0	M 8 x 40	65.0	22.0	20.0	39.0	23.0	5.0
79.0	M10 x 30	93.0	29.0	27.0	58.0	32.0	5.0
79.0	M10 x 50	93.0	29.0	27.0	58.0	32.0	5.0
100.0	M12 x 50	117.0	38.0	33.0	75.0	44.0	8.0
100.0	M14 x 50	117.0	38.0	33.0	75.0	44.0	8.0

