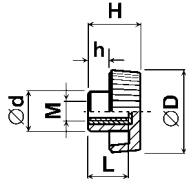


Matice kovové s plastovou hlavou Typ: 106b-068-D/M
Materiál: PA, závit mosazný; Barva: černá



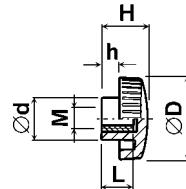
$\varnothing D$	M	L	$\varnothing d$	H	h
22.0	M 5	10.5	12.0	14.0	5.5
22.0	M 6	10.5	12.0	14.0	5.5



Matice kovové s plastovou hlavou Typ: 106-034-D/M
Materiál: PA, závit mosazný; Barva: černá



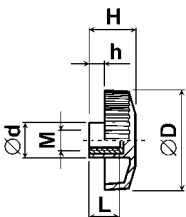
$\varnothing D$	M	L	$\varnothing d$	H	h
22.0	M 4	13.0	13.0	15.0	5.0
22.0	M 5	13.0	13.0	15.0	5.0
22.0	M 6	13.0	13.0	15.0	5.0
30.0	M 5	13.0	15.0	17.0	6.0
30.0	M 6	13.0	15.0	17.0	6.0
30.0	M 8	13.0	15.0	17.0	6.0
40.0	M 6	18.0	19.0	22.0	9.0
40.0	M 8	18.0	19.0	22.0	9.0
50.0	M 8	28.0	21.0	30.0	16.0
50.0	M10	28.0	21.0	30.0	16.0



Matice kovové s plastovou hlavou Typ: 106e-037-D/M
Materiál: PA, závit pozinkovaný; Barva: černá



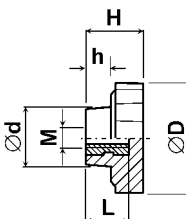
$\varnothing D$	M	L	$\varnothing d$	H	h
50.0	M 8	18.0	18.0	23.5	9.5
50.0	M10	18.0	18.0	23.5	9.5



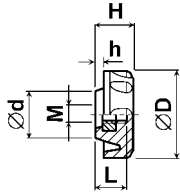
Matice kovové s plastovou hlavou Typ: 106e-007-D/M
Materiál: PP, závit pozinkovaný; Barva: černá



$\varnothing D$	M	L	$\varnothing d$	H	h
43.0	M 8	20.0	23.0	23.0	10.5
63.0	M 8	20.0	24.0	23.0	10.5
63.0	M10	20.0	24.0	23.0	10.5

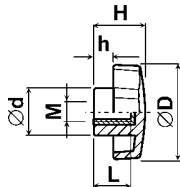


Matice kovové s plastovou hlavou Typ: 106b-007-D/M
Materiál: PP, závit pozinkovaný; Barva: černá



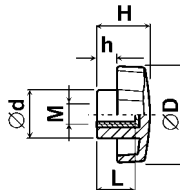
$\varnothing D$	M	L	$\varnothing d$	H	h
18.0	M 5	8.0	12.5	10.0	1.0
18.0	M 6	8.0	12.5	10.0	1.0
27.0	M 6	9.0	15.5	11.5	2.5
27.0	M 8	9.0	15.5	11.5	2.5
40.0	M 8	10.0	21.0	17.0	4.0
40.0	M10	10.0	21.0	17.0	4.0
40.0	M12	10.0	21.0	17.0	4.0
50.0	M 8	11.0	21.0	17.0	4.0
50.0	M10	11.0	21.0	17.0	4.0
50.0	M12	11.0	21.0	17.0	4.0
65.0	M10	14.0	25.0	20.0	4.0
65.0	M12	14.0	25.0	20.0	4.0

Matice kovové s plastovou hlavou Typ: 106-036-D/M
Materiál: PA, závit mosazný; Barva: černá



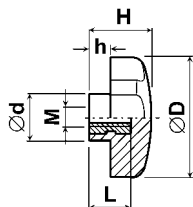
$\varnothing D$	M	L	$\varnothing d$	H	h
30.0	M 5	9.0	14.0	15.3	5.3
30.0	M 6	9.0	14.0	15.3	5.3
40.0	M 6	9.0	19.6	21.0	8.5
40.0	M 8	12.0	19.6	21.0	8.5
40.0	M10	15.0	19.6	21.0	8.5
50.0	M 6	9.0	20.0	18.0	6.0
50.0	M 8	12.0	20.0	20.0	8.0
50.0	M10	15.0	20.0	22.0	10.0

Matice kovové s plastovou hlavou Typ: 106-037-D/M (xL)
Materiál: PS, závit pozinkovaný; Barva: černá



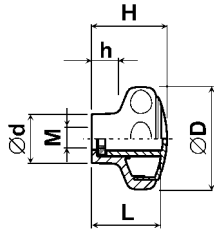
$\varnothing D$	M	L	$\varnothing d$	H	h
30.0	M 6	14.0	13.5	18.0	8.0
30.0	M 8	14.0	13.5	18.0	8.0
40.0	M 6	14.0	16.0	18.5	6.5
40.0	M 8	14.0	16.0	18.5	6.5
40.0	M 8	20.0	16.0	27.0	15.0
50.0	M 8	18.0	18.0	23.5	9.5
50.0	M10	18.0	18.0	23.5	9.5
60.0	M 8	18.0	18.0	24.0	9.0
60.0	M10	18.0	18.0	24.0	9.0

Matice kovové s plastovou hlavou Typ: 106a-007-D/M
Materiál: PP, závit pozinkovaný; Barva: černá



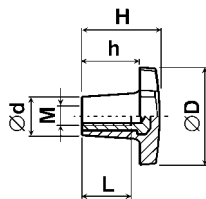
$\varnothing D$	M	L	$\varnothing d$	H	h
68.0	M 8	20.0	24.0	32.0	11.0
68.0	M10	20.0	24.0	32.0	11.0
68.0	M12	20.0	24.0	32.0	11.0

Matice kovové s plastovou hlavou Typ: 106a-068-D/M
Materiál: PA, závit pozinkovaný; Barva: černá



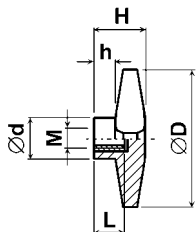
$\varnothing D$	M	L	$\varnothing d$	H	h
40.0	M 6	22.0	18.0	26.0	10.0
40.0	M 8	22.0	18.0	26.0	10.0
50.0	M 6	30.0	18.0	34.0	14.0
50.0	M 8	30.0	18.0	34.0	14.0
50.0	M10	30.0	23.0	34.0	14.0
63.0	M 8	36.0	23.0	40.0	14.0
63.0	M10	36.0	23.0	40.0	14.0
80.0	M10	48.0	25.0	52.0	20.0
80.0	M12	48.0	25.0	52.0	20.0

Matice kovové s plastovou hlavou Typ: 106-012-D/M
Materiál: termoset, závit pozinkovaný; Barva: černá



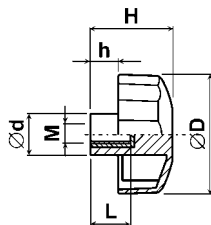
$\varnothing D$	M	L	$\varnothing d$	H	h
29.0	M 5	15.0	12.0	25.0	18.0
40.0	M 6	18.0	14.0	30.0	21.0
50.0	M 8	22.0	17.0	35.0	25.0
60.0	M10	25.0	21.0	40.0	28.0
68.0	M12	28.0	25.0	45.0	31.0

Matice kovové s plastovou hlavou Typ: 106a-034- D/M
Materiál: PA, závit mosazný; Barva: černá

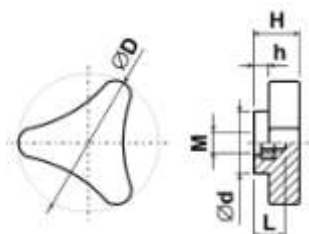


$\varnothing D$	M	L	$\varnothing d$	H	h
40.0	M 5	18.0	16.0	22.0	9.0
40.0	M 6	18.0	16.0	22.0	9.0
40.0	M 8	18.0	16.0	22.0	9.0
60.0	M 5	18.0	17.0	22.0	9.0
60.0	M 6	18.0	17.0	22.0	9.0
60.0	M 8	18.0	17.0	22.0	9.0
60.0	M10	18.0	17.0	22.0	9.0

Matice kovové s plastovou hlavou Typ: 106b-037-D/M
Materiál: PP, závit pozinkovaný; Barva: černá



$\varnothing D$	M	L	$\varnothing d$	H	h
50.0	M 6	25.0	17.5	35.5	11.5
50.0	M 8	16.0	17.5	35.5	11.5
50.0	M10	16.0	17.5	35.5	11.5



$\varnothing D$	M	L	$\varnothing d$	H	h
45.0	M 8	12.0	20.0	14.5	5.0
45.0	M10	12.0	20.0	14.5	5.0