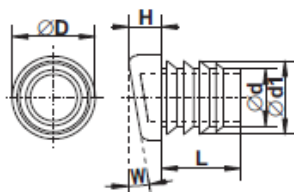


Zátky kruhové zkosené

Typ: 238-034-trubka (W)

Materiál: PE Barva: černá

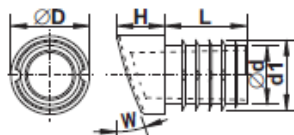


trubka	$\varnothing D$	H	W	$\varnothing d$	$\varnothing d1$	L
18 x 1.5	18.0	8.5	12°	14.1	15.5	20.0
18 x 1.5	18.0	9.5	15°	14.1	15.5	20.0
18 x 1.5	18.0	9.7	21°	14.1	15.5	20.0
20 x 1.5-2	20.0	8.0	9°	13.4	17.6	20.0
20 x 2-2.5	20.0	8.0	9°	13.3	16.5	20.0
20 x 1.5-2	20.0	9.0	12°	13.5	17.8	20.0
20 x 2-2.5	20.0	9.0	12°	13.3	16.5	20.0
20 x 1.5-2	20.0	10.0	15°	13.4	17.6	20.0
20 x 2-2.5	20.0	10.0	15°	13.0	16.5	20.0
20 x 1.5-2	20.0	11.3	18°	13.4	17.6	20.0
20 x 2-2.5	20.0	11.3	18°	13.0	16.5	20.0
22 x 1.5-2	22.0	8.0	9°	15.5	19.6	20.0
22 x 1.5-2	22.0	9.0	12°	15.0	19.6	20.0
22 x 1.5-2	22.0	10.0	15°	15.3	19.7	20.0
22 x 2	22.0	10.0	15°	15.5	19.3	20.0
22 x 2.5-3	22.0	10.0	15°	13.5	17.6	20.0
22 x 1.5-2	22.0	11.0	18°	15.0	19.5	20.0
22 x 1.5-2	22.0	11.7	22°	17.0	20.0	20.0
25 x 1.5-2	25.0	8.5	9°	18.0	22.5	20.0
25 x 1.5-2	25.0	9.5	12°	18.0	22.5	20.0
25 x 1.5-2	25.0	11.5	15°	18.2	22.5	20.0
25 x 1.5-2	25.0	12.0	18°	18.2	22.5	20.0

Zátky kruhové zkosené

Typ: 238a-034-trubka (W)

Materiál: PE Barva: černá, bílá

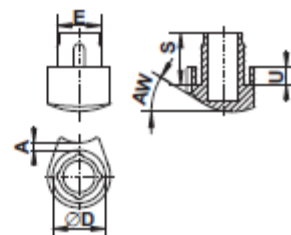


trubka	$\varnothing D$	H	$\varnothing d$	L	$\varnothing d1$	W
18 x 1.5-2	18.0	10.7	8.6	21.0	15.6	8°-12°
18 x 1.5-2	18.0	11.4	12.0	21.0	15.6	12°-18°
18 x 1.5-2	18.0	13.7	12.0	21.0	15.6	18°-22°
20 x 1.5-2	20.0	12.1	14.0	23.0	17.6	12°-18°
20 x 1.5-2	20.0	14.5	14.0	23.0	17.6	18°-22°
22 x 1.5-2	22.0	12.9	16.0	25.0	19.6	12°-18°
22 x 1.5-2	22.0	15.3	16.0	25.0	19.6	18°-22°
25 x 1.5-2	25.0	13.8	19.0	28.0	22.6	12°-18°
25 x 1.5-2	25.0	16.3	19.0	28.0	22.6	18°-22°

Zátky kruhové pro stohování židlí

Typ: 592-034-trubka (AW)

Materiál: PE Barva: černá, bílá, přírodní

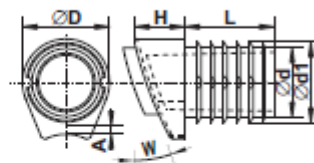


trubka $\varnothing D$	S	U	AW	A
20 x 1.5	20.0	7.0	0-30°	2-3
20 x 2	20.0	7.0	0-30°	2-3
22 x 1.5	20.0	7.0	0-30°	2-3
22 x 2	20.0	7.0	0-30°	2-3
25 x 1.5	20.0	7.0	0-30°	2-3
25 x 2	20.0	7.0	0-30°	2-3

Zátky kruhové pro stohování židlí s filcem

Typ: 592a-034-trubka (W) s filcem

Materiál: PE+filc Barva: černá, bílá

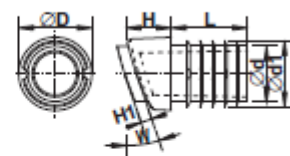


trubka $\varnothing D$	H	$\varnothing d$	L	$\varnothing d1$	W	A
18 x 1.5-2	11.4	12.0	21.0	15.6	12°-18°	3.0
18 x 1.5-2	13.7	12.0	21.0	15.6	18°-22°	3.0
20 x 1.5-2	12.1	14.0	23.0	17.6	12°-18°	3.0
20 x 1.5-2	14.5	14.0	23.0	17.6	18°-22°	3.0
22 x 1.5-2	12.9	16.0	25.0	19.6	12°-18°	3.0
22 x 1.5-2	15.3	16.0	25.0	19.6	18°-22°	3.0
25 x 1.5-2	13.8	19.0	28.0	22.6	12°-18°	3.0
25 x 1.5-2	16.3	19.0	28.0	22.6	18°-22°	3.0

Zátky kruhové zkosené s filcem

Typ: 598-034-trubka (W) s filcem

Materiál: PE+filc Barva: černá, bílá



trubka	$\varnothing D$	H	$\varnothing d$	L	$\varnothing d1$	W
18 x 1.5-2	18.0	10.7	8.6	21.0	15.6	8°-12°
18 x 1.5-2	18.0	11.4	12.0	21.0	15.6	12°-18°
18 x 1.5-2	18.0	13.7	12.0	21.0	15.6	18°-22°
20 x 1.5-2	20.0	12.1	14.0	23.0	17.6	12°-18°
20 x 1.5-2	20.0	14.5	14.0	23.0	17.6	18°-22°
22 x 1.5-2	22.0	12.9	16.0	25.0	19.6	12°-18°
22 x 1.5-2	22.0	15.3	16.0	25.0	19.6	18°-22°
25 x 1.5-2	25.0	13.8	19.0	28.0	22.6	12°-18°
25 x 1.5-2	25.0	16.3	19.0	28.0	22.6	18°-22°