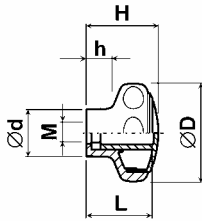
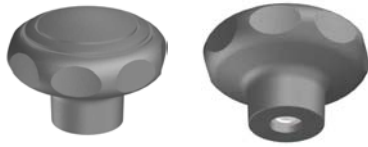
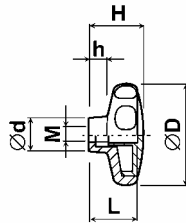
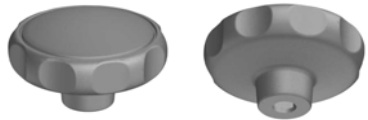


Plastové hlavy pro kovové šrouby a matice Typ: 376-068-D/M
Materiál: PA; Barva: černá



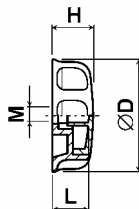
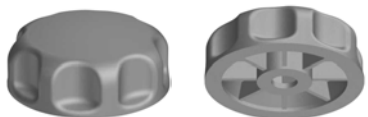
ØD	M	L	Ød	H	h
40.0	M 6	22.0	18.0	26.0	10.0
40.0	M 8	22.0	18.0	26.0	10.0
50.0	M 6	30.0	18.0	34.0	14.0
50.0	M 8	30.0	18.0	34.0	14.0
50.0	M10	30.0	23.0	34.0	14.0
63.0	M 8	36.0	23.0	40.0	14.0
63.0	M10	36.0	23.0	40.0	14.0
80.0	M10	48.0	25.0	52.0	20.0
80.0	M12	48.0	25.0	52.0	20.0

Plastové hlavy pro kovové šrouby a matice Typ: 376a-043-D/M
Materiál: PA; Barva: černá



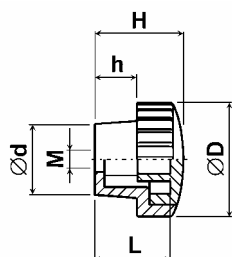
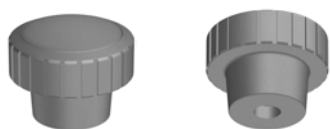
ØD	M	L	Ød	H	h
28.0	M 4	15.0	16.0	18.0	9.0
28.0	M 5	15.0	16.0	18.0	9.0
28.0	M 6	15.0	16.0	18.0	9.0
32.0	M 4	16.0	19.0	19.0	10.0
32.0	M 5	16.0	19.0	19.0	10.0
32.0	M 6	16.0	19.0	19.0	10.0
32.0	M 8	16.0	19.0	19.0	10.0
39.0	M 4	24.0	23.0	27.0	11.0
39.0	M 5	24.0	23.0	27.0	11.0
39.0	M 6	24.0	23.0	27.0	11.0
39.0	M 8	24.0	23.0	27.0	11.0
40.0	M 4	22.0	23.0	25.0	11.0
40.0	M 5	22.0	23.0	25.0	11.0
40.0	M 6	22.0	23.0	25.0	11.0
40.0	M 8	22.0	23.0	25.0	11.0
42.0	M 5	23.0	19.0	27.0	10.0
42.0	M 6	23.0	19.0	27.0	10.0
42.0	M 8	23.0	19.0	27.0	10.0
42.0	M10	24.0	23.0	28.0	10.0
55.0	M 6	25.0	20.0	30.0	11.0
55.0	M 8	25.0	20.0	30.0	11.0
62.0	M 6	30.0	23.0	34.0	12.0
62.0	M 8	30.0	23.0	34.0	12.0
62.0	M10	30.0	23.0	34.0	12.0

Plastové hlavy pro kovové šrouby a matice Typ: 376b-043-D/M
Materiál: PA; Barva: černá



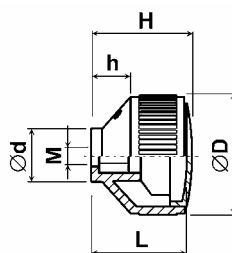
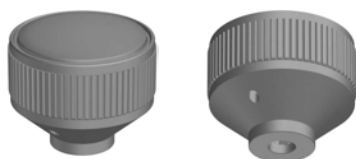
ØD	M	L	H
55.0	M 6	16.0	20.0
55.0	M 8	16.0	20.0

Plastové hlavy pro kovové šrouby a matice Typ: 376c-043-D/M
Materiál: PA; Barva: černá



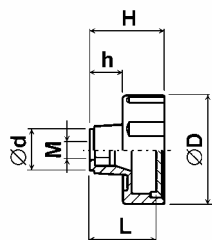
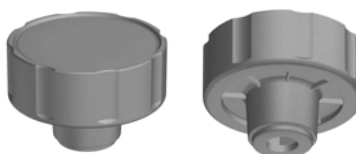
$\varnothing D$	M	L	$\varnothing d$	H	h
21.0	M 4	10.0	12.0	13.5	6.0
21.0	M 5	10.0	12.0	13.5	6.0
27.0	M 5	17.0	17.0	21.0	10.5
27.0	M 6	17.0	17.0	21.0	10.5
27.0	M 8	17.0	17.0	21.0	10.5

Plastové hlavy pro kovové šrouby a matice Typ: 376d-043-D/M
Materiál: PA; Barva: černá



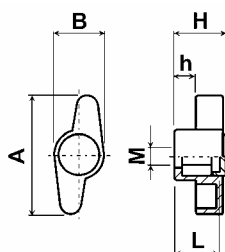
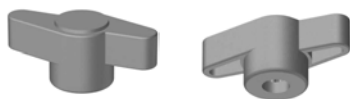
$\varnothing D$	M	L	$\varnothing d$	H	h
44.0	M 6	35.0	20.0	37.0	15.0
44.0	M 8	35.0	20.0	37.0	15.0

Plastové hlavy pro kovové šrouby a matice Typ: 376e-043-D/M
Materiál: PA; Barva: černá



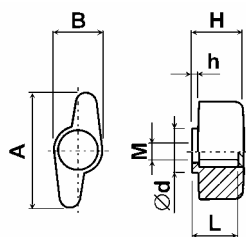
$\varnothing D$	M	L	$\varnothing d$	H	h
63.0	M 8	35.0	17.0	43.0	18.0
63.0	M10	35.0	24.0	43.0	18.0
63.0	M12	35.0	24.0	43.0	18.0

Plastové hlavy pro kovové šrouby a matice Typ: 376f-043-A/M
Materiál: PA; Barva: černá



A	M	L	B	H	h
36.0	M 4	12.0	16.0	18.0	5.0
36.0	M 5	12.0	16.0	18.0	5.0
36.0	M 6	12.0	16.0	18.0	5.0
45.0	M 6	16.0	19.0	18.0	8.0
45.0	M 8	16.0	19.0	18.0	8.0

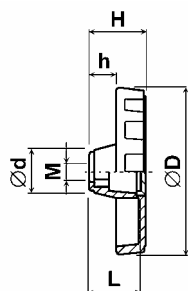
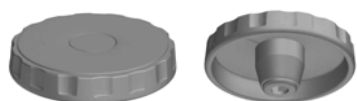
Plastové hlavy pro kovové šrouby a matice Typ: 376g-043-A/M
Materiál: PA; Barva: černá



A	M	L	B	ød	H	h
28.0	M 4	12.0	14.0	13.0	14.0	2.0
28.0	M 5	12.0	14.0	13.0	14.0	2.0
34.0	M 5	14.0	16.0	15.0	17.0	2.5
34.0	M 6	14.0	16.0	15.0	17.0	2.5

Poznámka: Lze použít i jako průchozí.

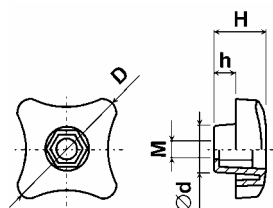
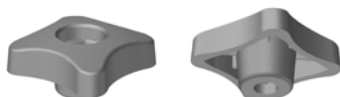
Plastové hlavy pro kovové šrouby a matice Typ: 376h-043-D/M
Materiál: PA; Barva: černá



øD	M	L	ød	H	h
100.0	M10	30.0	26.0	35.0	17.0
100.0	M12	30.0	26.0	35.0	17.0

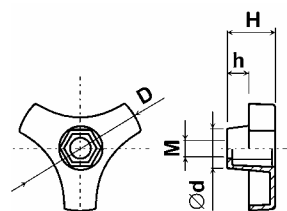
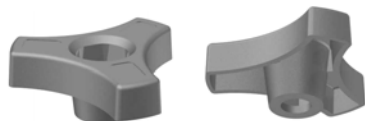
Poznámka: Lze použít i jako průchozí.

Plastové hlavy pro kovové šrouby a matice Typ: 376i-043- D/M
Materiál: PA; Barva: černá

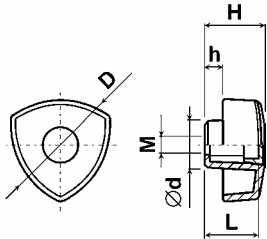


øD	M	ød	H	h
40.0	M 5	15.0	16.0	6.0
40.0	M 6	15.0	16.0	6.0

Plastové hlavy pro kovové šrouby a matice Typ: 376-043-D/M
Materiál: PA; Barva: černá



øD	M	ød	H	h
55.0	M 6	16.0	20.0	10.0
55.0	M 8	16.0	20.0	10.0



$\varnothing D$	M	L	$\varnothing d$	H	h
30.0	M 4	9.0	14.0	14.0	4.0
30.0	M 5	9.0	14.0	14.0	4.0
30.0	M 6	9.0	14.0	14.0	4.0
40.0	M 6	25.0	16.0	30.0	16.0
40.0	M 8	25.0	16.0	30.0	16.0
48.0	M 6	21.0	21.0	26.0	8.0
48.0	M 8	21.0	21.0	26.0	8.0
60.0	M10	35.0	22.0	40.0	20.0
60.0	M12	35.0	22.0	40.0	20.0

Poznámka: Lze použít i jako průchozí.