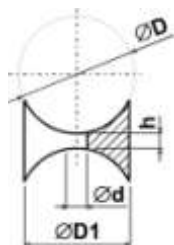


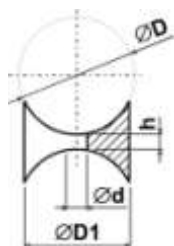
**Podložky sedlové oboustranné Typ: 389-034-Dxh/d**  
Materiál: PE; Barva: černá



$\varnothing D$	$h$	$\varnothing d$	$\varnothing D1$	$\varnothing D$	$h$	$\varnothing d$	$\varnothing D1$
12.0-14.0	2.5	5.2	11.0	25.0-28.0	22.5	8.2	22.0
16.0-20.0	7.5	6.2	15.0	25.0-28.0	25.0	8.2	22.0
16.0-20.0	10.0	6.2	15.0	25.0-28.0	27.5	8.2	22.0
16.0-20.0	12.5	6.2	15.0	25.0-28.0	30.0	8.2	22.0
16.0-20.0	15.0	6.2	15.0	29.0-32.0	3.0	8.2	25.0
16.0-20.0	17.5	6.2	15.0	29.0-32.0	5.0	8.2	25.0
18.0-20.0	2.5	5.2	17.0	29.0-32.0	7.5	8.2	25.0
18.0-20.0	2.5	6.2	17.0	29.0-32.0	10.0	8.2	25.0
20.0-23.0	3.0	5.2	19.0	29.0-32.0	12.5	8.2	25.0
20.0-23.0	3.0	6.2	19.0	29.0-32.0	15.0	8.2	25.0
20.0-23.0	11.5	5.2	19.0	29.0-32.0	17.5	8.2	25.0
20.0-23.0	11.5	6.2	19.0	29.0-32.0	20.0	8.2	25.0
24.0-26.0	3.0	6.2	22.0	29.0-32.0	22.5	8.2	25.0
24.0-26.0	3.0	8.2	22.0	29.0-32.0	25.0	8.2	25.0
25.0-28.0	3.0	8.2	22.0	29.0-32.0	27.5	8.2	25.0
25.0-28.0	5.0	8.2	22.0	29.0-32.0	30.0	8.2	25.0
25.0-28.0	7.5	8.2	22.0	30.0-34.0	3.5	6.2	28.0
25.0-28.0	10.0	8.2	22.0	30.0-34.0	3.5	8.2	28.0
25.0-28.0	12.5	8.2	22.0	30.0-34.0	3.5	10.2	28.0
25.0-28.0	15.0	8.2	22.0	38.0-42.0	5.0	6.2	35.0
25.0-28.0	17.5	8.2	22.0	38.0-42.0	5.0	8.2	35.0
25.0-28.0	20.0	8.2	22.0	38.0-42.0	5.0	10.2	35.0

**Poznámka:** Pro rovnoběžné trubky.

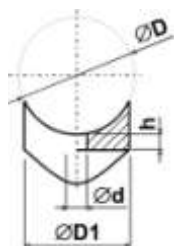
**Podložky sedlové oboustranné Typ: 389-068-Dxh/d**  
Materiál: PE; Barva: černá



$\varnothing D$	$h$	$\varnothing d$	$\varnothing D1$	$\varnothing D$	$h$	$\varnothing d$	$\varnothing D1$
25.0-32.0	5.0	8.2	25.0	25.0-32.0	18.0	8.2	25.0
25.0-32.0	6.0	8.2	25.0	25.0-32.0	19.0	8.2	25.0
25.0-32.0	7.0	8.2	25.0	25.0-32.0	20.0	8.2	25.0
25.0-32.0	8.0	8.2	25.0	25.0-32.0	21.0	8.2	25.0
25.0-32.0	9.0	8.2	25.0	25.0-32.0	22.0	8.2	25.0
25.0-32.0	10.0	8.2	25.0	25.0-32.0	23.0	8.2	25.0
25.0-32.0	11.0	8.2	25.0	25.0-32.0	24.0	8.2	25.0
25.0-32.0	12.0	8.2	25.0	25.0-32.0	25.0	8.2	25.0
25.0-32.0	13.0	8.2	25.0	25.0-32.0	26.0	8.2	25.0
25.0-32.0	14.0	8.2	25.0	25.0-32.0	27.0	8.2	25.0
25.0-32.0	15.0	8.2	25.0	25.0-32.0	28.0	8.2	25.0
25.0-32.0	16.0	8.2	25.0	25.0-32.0	29.0	8.2	25.0
25.0-32.0	17.0	8.2	25.0	25.0-32.0	30.0	8.2	25.0

**Poznámka:** Pro rovnoběžné trubky.

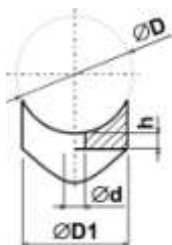
**Podložky sedlové oboustranné 90° Typ: 389a-034-Dxh/d**  
Materiál: PE; Barva: černá



$\varnothing D$	$h$	$\varnothing d$	$\varnothing D1$	$\varnothing D$	$h$	$\varnothing d$	$\varnothing D1$
12.0-14.0	2.5	5.2	11.0	25.0-28.0	3.0	8.2	22.0
16.0-20.0	7.5	6.2	15.0	25.0-28.0	5.0	8.2	22.0
16.0-20.0	10.0	6.2	15.0	25.0-28.0	7.5	8.2	22.0
16.0-20.0	12.5	6.2	15.0	25.0-28.0	10.0	8.2	22.0
16.0-20.0	15.0	6.2	15.0	25.0-28.0	12.5	8.2	22.0
16.0-20.0	17.5	6.2	15.0	25.0-28.0	15.0	8.2	22.0
18.0-20.0	2.5	5.2	17.0	25.0-28.0	17.5	8.2	22.0
18.0-20.0	2.5	6.2	17.0	25.0-28.0	20.0	8.2	22.0
20.0-23.0	3.0	5.2	19.0	25.0-28.0	22.5	8.2	22.0
20.0-23.0	3.0	6.2	19.0	25.0-28.0	25.0	8.2	22.0
20.0-23.0	11.5	5.2	19.0	25.0-28.0	27.5	8.2	22.0
20.0-23.0	11.5	6.2	19.0	25.0-28.0	30.0	8.2	22.0
24.0-26.0	3.0	6.2	22.0	29.0-32.0	3.0	8.2	25.0
24.0-26.0	3.0	8.2	22.0	29.0-32.0	5.0	8.2	25.0



pokračování **389a-034**



$\varnothing D$	$h$	$\varnothing d$	$\varnothing D1$	$\varnothing D$	$h$	$\varnothing d$	$\varnothing D1$
29.0-32.0	7.5	8.2	25.0	29.0-32.0	27.5	8.2	25.0
29.0-32.0	10.0	8.2	25.0	29.0-32.0	30.0	8.2	25.0
29.0-32.0	12.5	8.2	25.0	30.0-34.0	3.5	6.2	28.0
29.0-32.0	15.0	8.2	25.0	30.0-34.0	3.5	8.2	28.0
29.0-32.0	17.5	8.2	25.0	30.0-34.0	3.5	10.2	28.0
29.0-32.0	20.0	8.2	25.0	38.0-42.0	5.0	6.2	35.0
29.0-32.0	22.5	8.2	25.0	38.0-42.0	5.0	8.2	35.0
29.0-32.0	25.0	8.2	25.0	38.0-42.0	5.0	10.2	35.0

**Poznámka:** Pro křižující se trubky 90°.