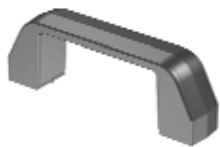
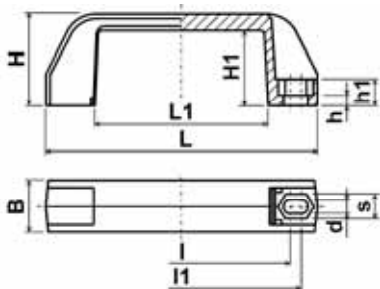


Držadla průmyslová Typ: 503-043-LxH
Materiál: PA plněný sklem; Barva: černá



| L | H | B | L1 | H1 | l | l1 | d | s | h | h1 |
|-------|------|------|-------|------|-------|-------|-----|------|-----|------|
| 110.0 | 36.0 | 21.0 | 72.5 | 30.0 | 90.0 | 94.0 | 6.5 | 10.0 | 5.0 | 12.0 |
| 137.0 | 42.0 | 26.0 | 92.5 | 35.0 | 112.0 | 118.0 | 8.5 | 13.0 | 5.0 | 13.5 |
| 151.0 | 42.0 | 26.0 | 106.5 | 35.0 | 126.0 | 132.0 | 8.5 | 13.0 | 5.0 | 13.5 |
| 171.0 | 42.0 | 26.0 | 126.5 | 35.0 | 146.0 | 152.0 | 8.5 | 13.0 | 5.0 | 13.5 |
| 201.0 | 42.0 | 28.0 | 156.5 | 33.0 | 176.0 | 182.0 | 8.5 | 13.0 | 5.0 | 13.5 |

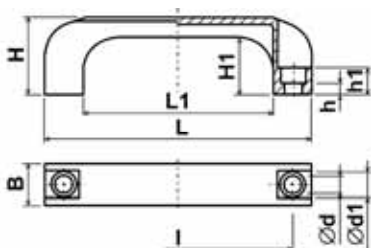


Poznámka: K držadlům lze dokoupit krytky montážních šroubů pod objednacím číslem 503-043-110 krytka (pro L=110) a 503-043-137+151+171+201 (pro L=137, L=151, L=171 a L=201).

Držadla průmyslová Typ: 503-514-LxH
Materiál: PA plněný sklem; Barva: černá



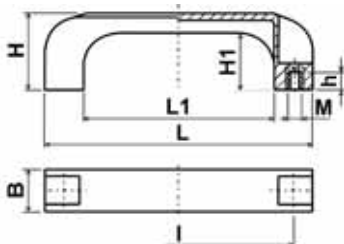
| L | H | B | L1 | H1 | l | ∅d | ∅d1 | h | h1 |
|-------|------|------|-------|------|-------|------|------|------|------|
| 110.0 | 37.0 | 21.0 | 76.0 | 29.0 | 94.0 | 6.5 | 11.0 | 6.0 | 13.0 |
| 139.0 | 40.0 | 24.0 | 99.0 | 30.0 | 120.0 | 8.5 | 14.0 | 7.0 | 15.5 |
| 151.0 | 43.0 | 26.0 | 107.0 | 33.0 | 132.0 | 8.5 | 14.0 | 7.0 | 16.0 |
| 200.0 | 50.0 | 28.0 | 151.0 | 39.0 | 180.0 | 8.5 | 14.5 | 12.0 | 21.0 |
| 260.0 | 53.0 | 32.0 | 200.0 | 41.0 | 235.0 | 10.5 | 17.0 | 10.0 | 21.0 |



Držadla průmyslová Typ: 503a-514-LxH
Materiál: PA plněný sklem; Barva: černá

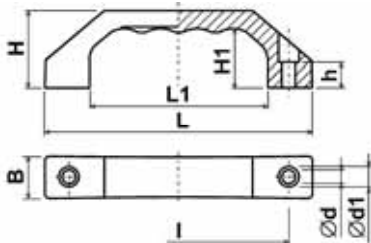


| L | H | B | L1 | H1 | l | M | h |
|-------|------|------|-------|------|-------|-----|------|
| 110.0 | 37.0 | 21.0 | 76.0 | 29.0 | 94.0 | M 6 | 7.0 |
| 139.0 | 40.0 | 24.0 | 99.0 | 30.0 | 120.0 | M 6 | 9.0 |
| 151.0 | 43.0 | 26.0 | 107.0 | 33.0 | 132.0 | M 8 | 9.0 |
| 200.0 | 50.0 | 28.0 | 151.0 | 39.0 | 180.0 | M 8 | 14.0 |
| 260.0 | 53.0 | 32.0 | 200.0 | 41.0 | 235.0 | M10 | 14.0 |



Držadla průmyslová Typ: 503-622-LxH
 Materiál: PA; Barva: černá

| L | H | B | L1 | H1 | l | ∅d | ∅d1 | h |
|-------|------|------|------|------|-------|-----|-----|------|
| 123.0 | 36.0 | 20.0 | 82.0 | 26.5 | 101.0 | 5.5 | 9.0 | 11.5 |



Držadla průmyslová Typ: 503-086-LxH
 Materiál: PP; Barva: černá

| L | H | B | L1 | H1 | l | l1 | ∅d | ∅d1 | h | h1 |
|-------|------|------|-------|------|-------|-------|-----|------|-----|-----|
| 230.0 | 41.0 | 24.0 | 152.0 | 28.0 | 198.0 | | 6.5 | 12.0 | 7.0 | 9.5 |
| 255.0 | 41.0 | 24.0 | 155.0 | 28.0 | 191.0 | 233.0 | 5.8 | 10.5 | 5.0 | 9.0 |

